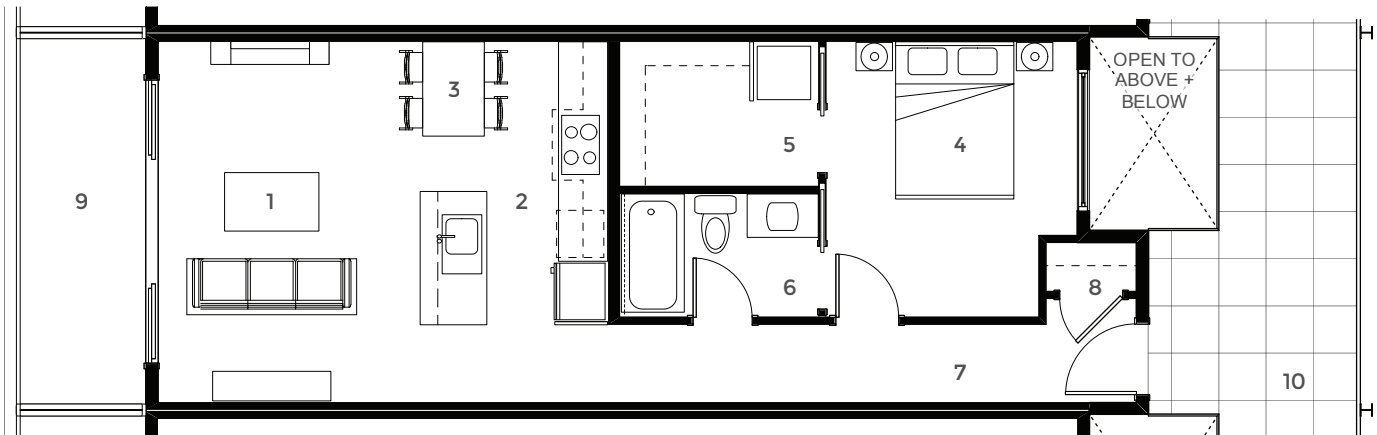
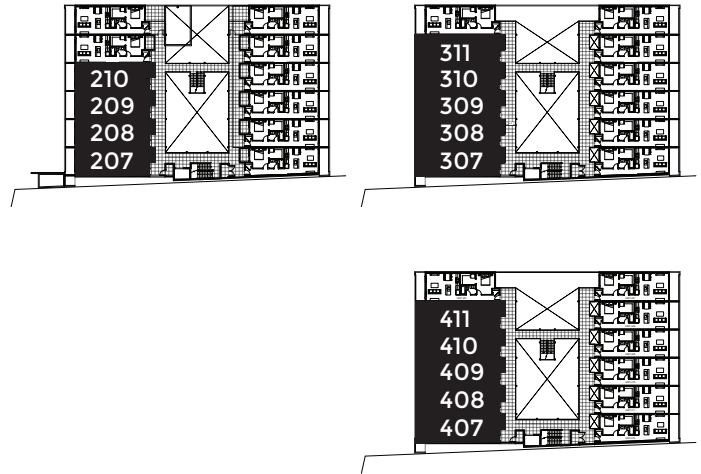


One Bedroom

FLOORS 2, 3, 4

HOMES 207-210, 307-311, 407-411

SQUARE FOOTAGE 650 sq ft



- | | | | |
|------------------------|-----------------|------------------|----------------|
| 1 Living | 15'-4" x 9'-1" | 6 Bath | 5'-3" x 8'-5" |
| 2 Kitchen | 9'-0" x 10'-0" | 7 Entry | 3'-4" x 22'-4" |
| 3 Dining | 6'-4" x 10'-0" | 8 Coat | 2'-1" x 3'-10" |
| 4 Bedroom | 11'-8" x 10'-8" | 9 Balcony | 15'-6" x 5'-4" |
| 5 W/I Closet & Laundry | 6'-2" x 8'-5" | 10 Ext. Corridor | |

The developer reserves the right to modify or change plans, specifications, features and prices without notice. Dimensions and sizes are approximate and are based on architectural measurements. ©2017 Island Creek Developments. All rights reserved.

FOR MORE INFORMATION

T 250-667-2135

C 250-212-1217

E andrea@91chapel.com

PRESENTATION CENTRE

301 Franklyn Street
Nanaimo, BC

EXPLORE

91chapel.com



91 CHAPEL