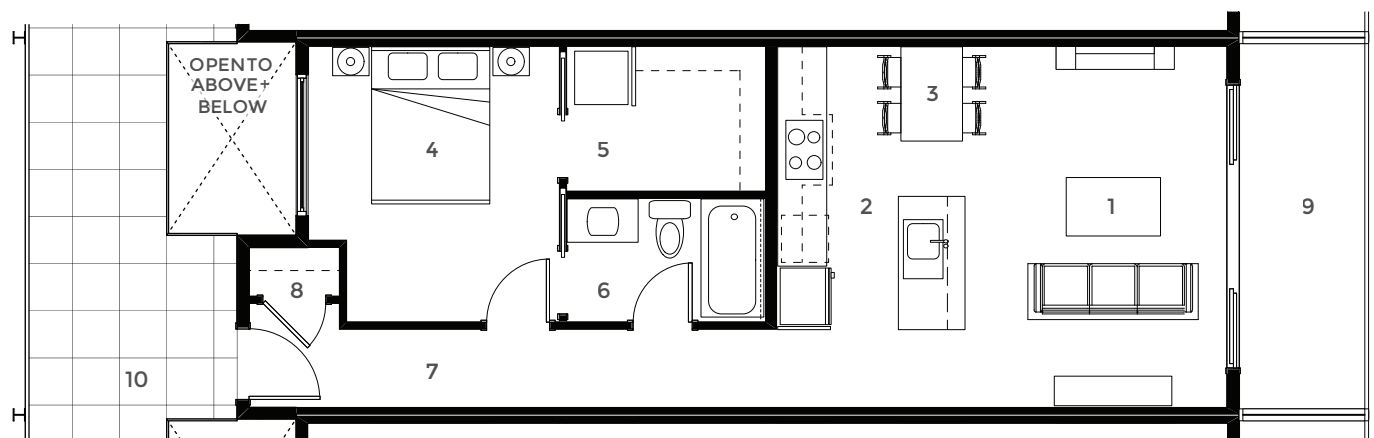


One Bedroom

FLOORS 3, 4

HOMES 302-305, 402-405

SQUARE FOOTAGE 650 sq ft



- 1 Living 15'-4" x 9'-1"
- 2 Kitchen 9'-0" x 10'-0"
- 3 Dining 6'-4" x 10'-0"
- 4 Bedroom 11'-8" x 10'-8"
- 5 W / I Closet 6'-2" x 8'-5"
& Laundry

- 6 Bath 5'-3" x 8'-5"
- 7 Entry 3'-4" x 22'-4"
- 8 Coat 2'-1" x 3'-10"
- 9 Balcony 15'-6" x 5'-4"
- 10 Ext. Corridor

The developer reserves the right to modify or change plans, specifications, features and prices without notice. Dimensions and sizes are approximate and are based on architectural measurements. ©2017 Island Creek Developments. All rights reserved.

FOR MORE INFORMATION

T 250-667-2135

C 250-212-1217

E andrea@91chapel.com

PRESENTATION CENTRE

301 Franklyn Street
Nanaimo, BC

EXPLORE

91chapel.com



91 CHAPEL