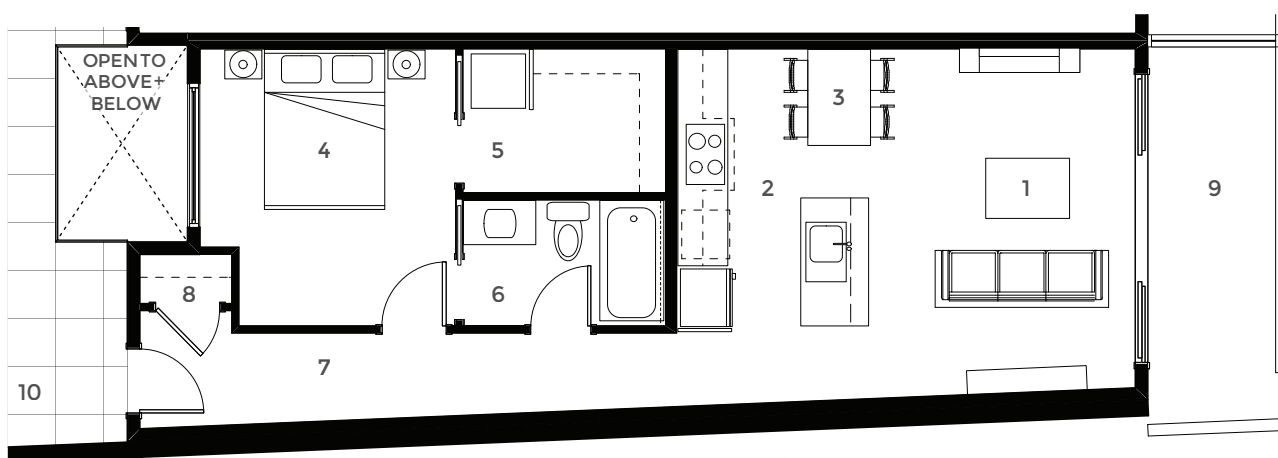


One Bedroom

FLOORS 3, 4

HOMES 306 + 406

SQUARE FOOTAGE 650 sq ft



- | | | | |
|--------------------------|-----------------|------------------|-----------------|
| 1 Living | 14'-6" x 9'-1" | 6 Bath | 5'-3" x 8'-5" |
| 2 Kitchen | 8'-4" x 10'-0" | 7 Entry | ~3'-8" x 22'-4" |
| 3 Dining | 6'-2" x 10'-0" | 8 Coat | 2'-1" x 3'-10" |
| 4 Bedroom | 11'-6" x 10'-8" | 9 Balcony | 15'-7" x 5'-4" |
| 5 W / I Closet & Laundry | 5'-11" x 8'-5" | 10 Ext. Corridor | |

The developer reserves the right to modify or change plans, specifications, features and prices without notice. Dimensions and sizes are approximate and are based on architectural measurements. ©2017 Island Creek Developments. All rights reserved.

FOR MORE INFORMATION

T 250-667-2135
 C 250-212-1217
 E andrea@91chapel.com

PRESENTATION CENTRE

301 Franklyn Street
 Nanaimo, BC

EXPLORE

91chapel.com



91 CHAPEL